

# SDSL's Cornerstone Newsletter

South Dakota State Library's e-newsletter

March 3, 2022

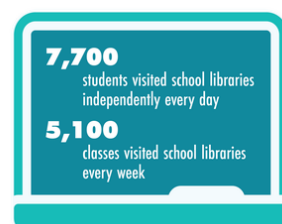
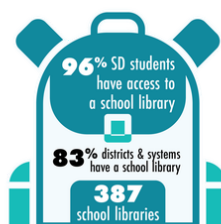
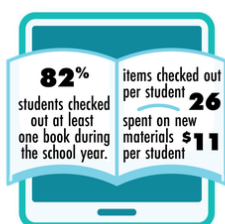
## School Library Survey Open March 1 - May 6

The annual South Dakota School Library Survey (SLS) is open March 1 - May 6. School districts and systems are asked to complete one survey per district/system. Survey data will be compiled and reported back to all stakeholders. This data can be informative in the district decision-making processes, school improvement planning, and library media programming.

In addition to online assistance via the [FAQs page](#), the SD State Library will provide districts with direct guidance if needed. For assistance, contact Shawn Behrends, [shawn.behrends@state.sd.us](mailto:shawn.behrends@state.sd.us), or Scottie Bruch, [scottie.bruch@state.sd.us](mailto:scottie.bruch@state.sd.us).

View data from last year's School Library Survey in the 2020-2021 Data Digest here:  
<https://library.sd.gov/SDSL/PUBL/DOC/RPT-SLDD-2021.pdf>.

## School Library Survey FAQs



# South Dakota School Libraries 2021 Data Digest



## About SDSL



Facebook



@LibrarySD

The South Dakota State Library provides leadership for innovation and excellence in libraries and services to state government.



800 Governors Drive, Pierre, SD,...



library@state.sd.us



6057733131



library.sd.gov

*The SDSL does not endorse any service or product listed in this newsletter.*

• DEPARTMENT OF EDUCATION  
• STATE LIBRARY