

A child wearing a yellow hard hat and safety glasses is focused on sorting through a large bin filled with small, colorful beads. The child is wearing a blue long-sleeved shirt and a yellow wristband. The background is slightly blurred, showing a wooden structure.

2019

PUBLIC LIBRARIES DATA DIGEST



**south dakota
STATE LIBRARY**

Leadership. Innovation. Excellence.



INSTITUTE of
Museum and Library
SERVICES

2019

PUBLIC LIBRARIES DATA DIGEST



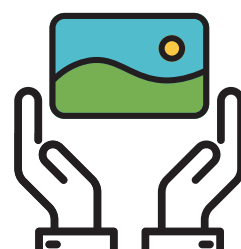
Libraries are a preferred destination.

In 2018, South Dakota's public libraries were visited **3.8 million times**.

That's an average of **5 visits per resident**.

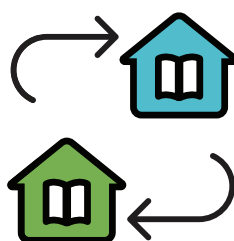
Library websites provide information about the library and access to digital library services.

SD public libraries reported more than **1.6 million website visits**.



Libraries deliver

literacy • education • value opportunity • enrichment entertainment • access



72% of public libraries engaged in **interlibrary loan transactions** to fulfill patron requests.

38,000 items borrowed from other libraries on behalf of patrons.



Online Resources



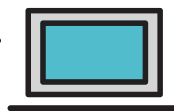
100% of SD residents have **FREE** access to

58 databases covering a wide variety of topics.

Residents can access these online resources on library public computers or via any internet connection within the state.



Virtual Access



91% of SD public libraries provide **free Wi-Fi access**.

Library Wi-Fi was used **700,000 times**.

Technology



Library **public computers** were used **480,000 hours** in 2018.

That's more than **433 hours per computer**.

Librarians



The ultimate search engines, librarians help everyone find just the right book and quickly guide you to the information you need - in the library or on the web.

615 people work in public libraries across South Dakota.

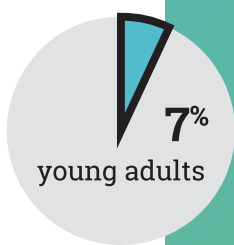
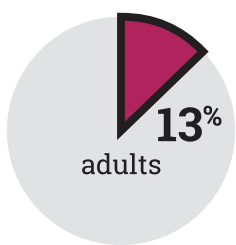
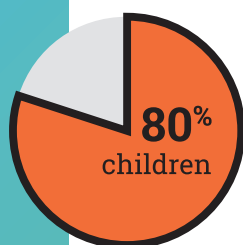
Library staff provided assistance & answers to **350,000** patron **questions**.



Library Programs

Libraries hosted more than **17,000 programs**.

337,000 people attended library programs.



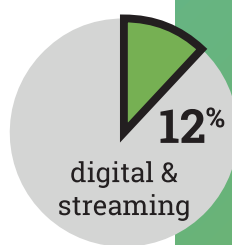
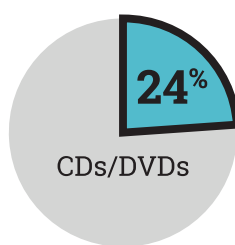
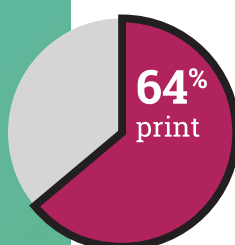
88% of libraries hosted a children's **summer reading program**.

27,000 people were helped through **one-to-one programs** like literacy activities, homework help, test proctoring, and homebound delivery.

Circulation

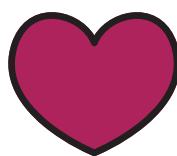


Libraries circulated more than **5.8 million physical & digital materials**.



41% of these items were **children's materials**.

Libraries are the heart of the community.



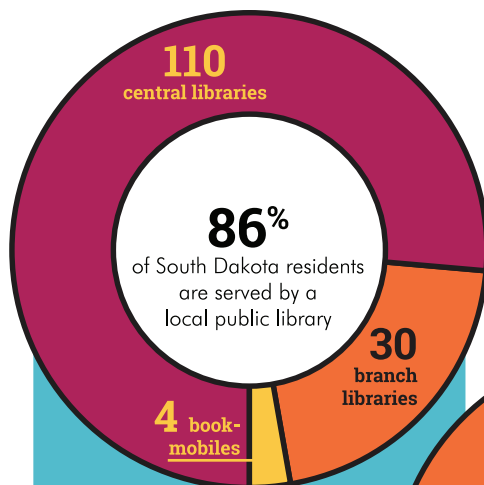
1,479 people volunteered a total of **33,000 hours** in public libraries.

650 residents volunteered their time as **library trustees**.

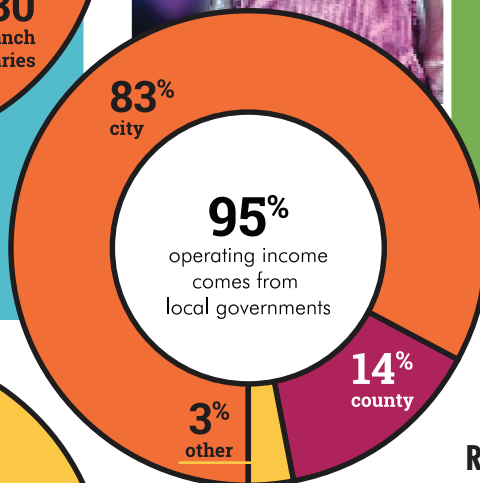
19% of public libraries have a **Friends of the Library** group.

10% of public libraries have a **library foundation**.

Community support builds strong public libraries.

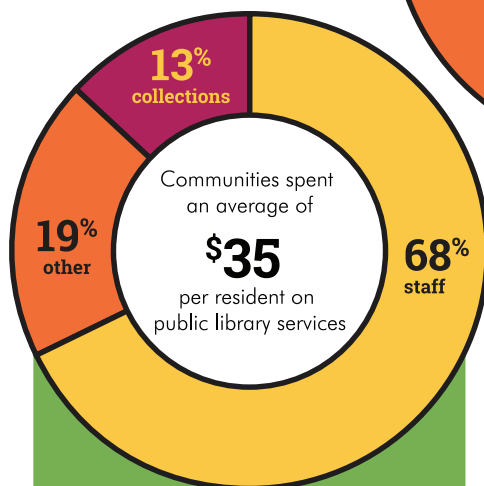


49% of state residents
have a library card.



Local governments
contributed
\$26.3 million
for public library
operating revenue.

**For every dollar spent
on SD public libraries,
residents receive a
RETURN ON INVESTMENT
of more than \$4
in programs & services used.**



Libraries purchased an average
of **\$4.59** per resident
on new materials.

Libraries are community partners.

Dynamic libraries attract businesses and new residents to the community. Libraries are anchors for downtown revitalization and community cultural centers.

National/Regional Comparisons

FY2017

Per capita*

	SD	MN	NE	ND	WY	USA
Total Operating Revenue	\$34.27	\$41.82	\$39.05	\$30.44	\$65.59	\$42.34
Total Operating Expenditures	\$33.08	\$40.89	\$37.11	\$28.76	\$54.82	\$39.59
Collection Expenditures	\$4.23	\$4.43	\$4.97	\$3.98	\$4.22	\$4.39
FTE Staff /25,000 pop.	11.2	10.1	12.7	8.9	18.2	11.4
Registered Users	0.47	0.70	0.69	0.40	0.62	0.55
Reference Transactions	0.42	0.63	0.53	0.74	0.82	0.77
Library Visits	4.7	4.2	4.9	3.2	5.8	4.2
Total Circulation	7.6	8.9	7.9	5.3	8.0	6.9
Program Attendance /1,000 pop.	403	297	546	333	643	379
Public Internet Computers /5,000 pop.	7.1	5.2	9.2	5.6	7.8	4.8
Public Computer Use Sessions	1.3	0.8	1.1	0.7	1.1	0.8
OTHER RATIOS:						
MLS degreed librarians as percentage of total FTE staff	13%	25%	15%	19%	13%	24%
Children's Circulation (% of total)	40%	40%	47%	37%	39%	35%
Computer user sessions per computer	905	790	615	648	724	859

*Per capita population is based on unduplicated population of legal service areas.



Thank you for supporting your local public library!

The information contained in this digest reflects the activity of South Dakota's public libraries. State data comprises information collected and submitted via the 2019 Public Libraries Survey for the fiscal year completed December 31, 2018.

PHOTO ABOVE: Sturgis Public Library; Photography by Deb Holland, Black Hills Pioneer © 2019

COVER PHOTO: Freeman Public Library; Photography by Tim Waltner, Freeman Courier © 2019